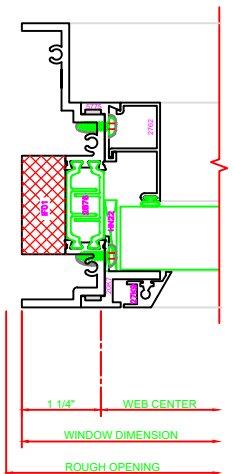


130 HEAD
 SERIES: 450G
 CASEMENT IN
 4-BAR ARMS

433 JAMB
 SERIES: 450G
 CASEMENT IN
 4-BAR ARMS

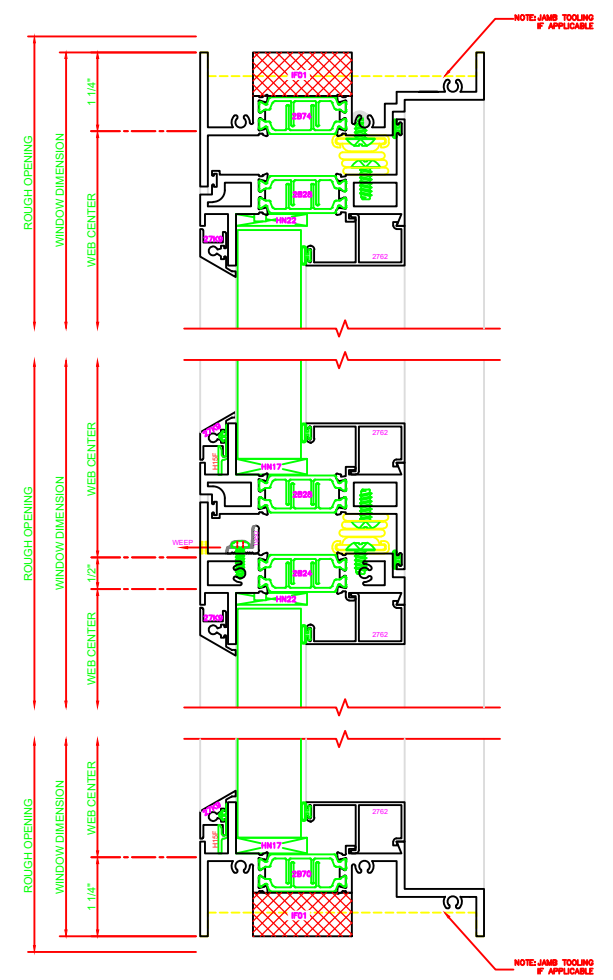
434 JAMB
 SERIES: 450G
 CASEMENT IN



402 JAMB
 SERIES: 450G
 FIXED

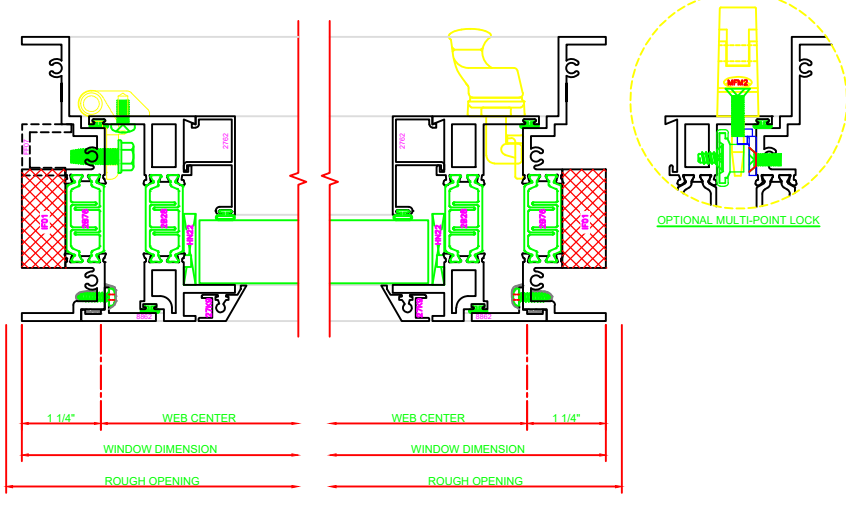
531 MEETING RAIL
 SERIES: 450G
 C.I./FIXED
 4-BAR ARMS

200 SILL
 SERIES: 450G
 FIXED



4-BAR ARMS BUTT HINGE

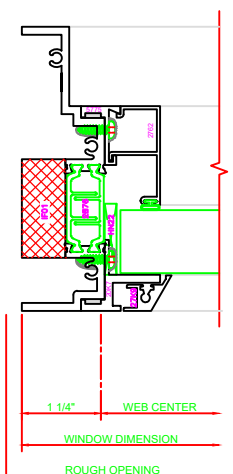
13 **ERECTOR NOTE:**
 THE HINGED JAMB FRAME SHALL BE
 INSTALLED PLUMB. ALL HINGES SHALL
 BE SECURELY BLOCKED AND
 ANCHORED TO THE CONDITION
 THROUGH THE HINGES OR AS CLOSE
 AS POSSIBLE TO THE HINGES.



131 HEAD
 SERIES: 450G
 CASEMENT IN
 BUTT HINGE

435 JAMB
 SERIES: 450G
 CASEMENT IN
 BUTT HINGE

434 JAMB
 SERIES: 450G
 CASEMENT IN



402 JAMB
 SERIES: 450G
 FIXED

533 MEETING RAIL
 SERIES: 450G
 C.I./FIXED
 BUTT HINGE

200 SILL
 SERIES: 450G
 FIXED

